

VDMA/ISO6431 Cylinder

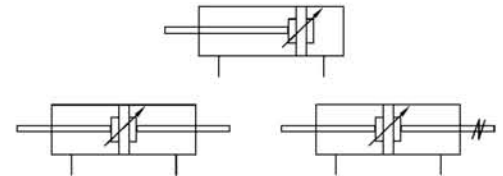
Characteristic:

- Front and rear caps are finished by aluminum alloy die-casting, CNC mechanically processed with high precision.
- Aluminum tube is imported, stainless forever with friction & corrosion resistance.
- Adopt imported none lubrication, long time service and no need lubrication maintenance.
- Unique cushion technique makes smooth action.
- May add the sensor equipment to easily control.
- In terms of DNGU series, pull-rod is hidden inside.



Specification:

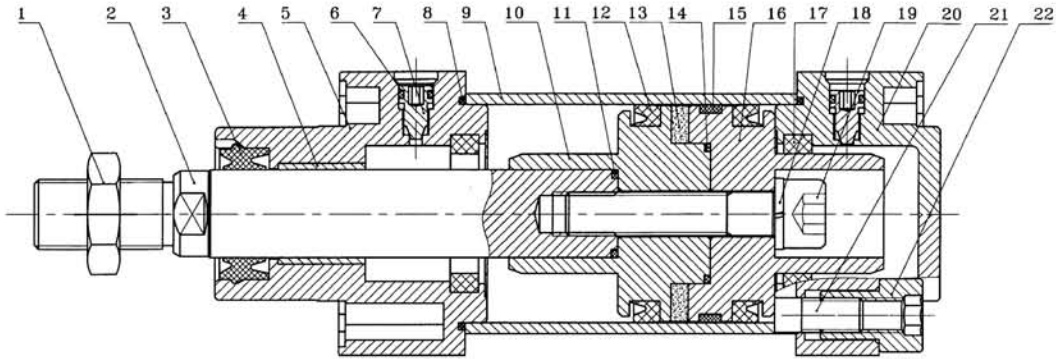
Type	32	40	50	63	80	100	125	160
Motion	Double acting							
Series	DNG, DNGD, DNGU							
Fluid	Air							
Operating pressure range (Mpa)	0.1~1							
Operating speed (mm/sec)	50~500							
Ambient temperature (°C)	-10~70							
Cushion	Adjustable cushion at both ends							
Port size (G)	1/8"	1/4"		3/8"			1/2"	



How to order:

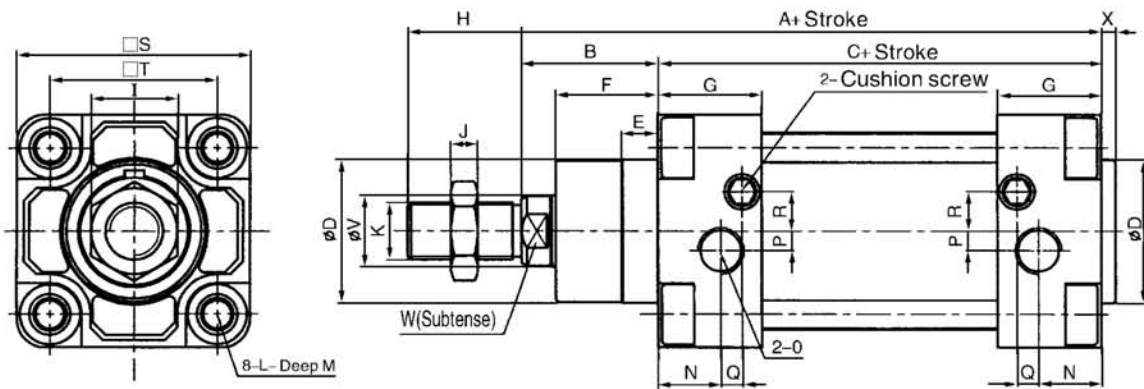
DNG	50	×	100	FA	S	2
Series	Bore		stroke	Mounting type	with magnet	Sensor
DNG Standard Cylinder	φ 32			Blank(Standard)	Switch magnet	1:1pcs
DNGD Double axial Cylinder	φ 40			FA	Blank without magnet	2:2pcs
DNGU Tie-rod hidden Cylinder	φ 50			FB		
	φ 63			CA		
	φ 80			CB		
	φ 100			LB		
	φ 125			TC		
	φ 160					

Inner structure drawing:



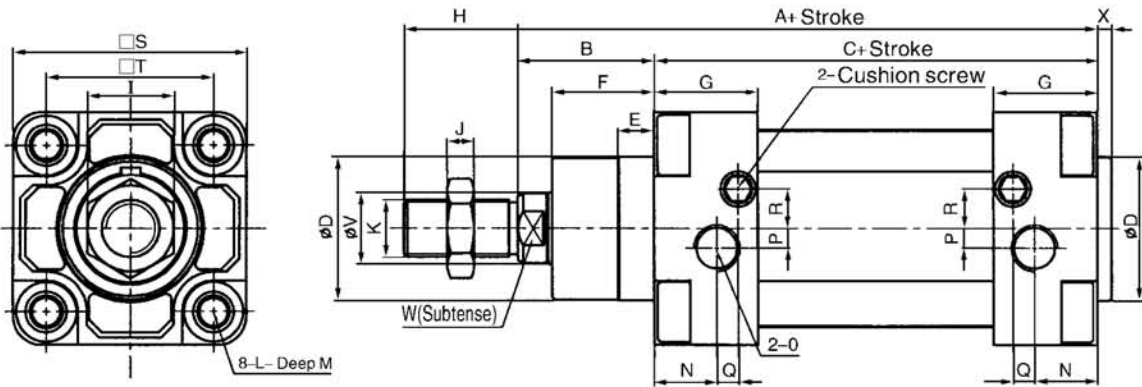
1	hexagon nut	7	cushion adjusting bolt	13	magnet	19	inner hexagon bolt
2	piston ring	8	O-ring	14	O-ring	20	rear cover
3	compageseal	9	tube	15	guard seals	21	pull-rod
4	oiled bearing	10	piston 1	16	piston 2	22	pull-rod nut
5	front cover	11	O ring	17	compageseal		
6	O-ring	12	Y seal	18	spring washer		

DNG Series



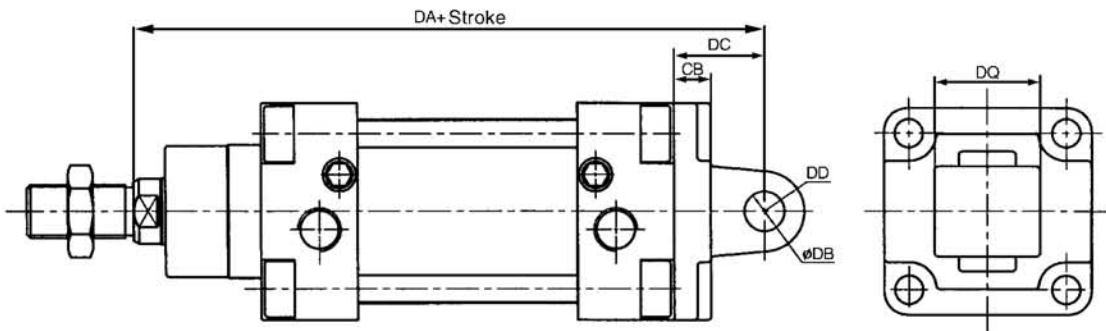
stroke	A	B	C	D	E	F	G	H	I	J	K	L	M	N	O	P	Q	R	S	T	V	W	X
32	120	26	94	30	10	19	25	22	17	6	M10x1.25	M6	16	9	G1/8	2	7	7	50	32.5	12	10	4
40	135	30	105	35	10	21.5	26	24	17	7	M12x1.25	M6	12	11	G1/4	2	5	9	55	38	16	13	4
50	142	38	104	40	12	28.5	29	32	23	8	M16x1.5	M8	14.5	17	G1/4	5	2	11	65	46.5	20	17	4
63	158	37	121	45	12	28.5	35.5	32	23	8	M16x1.5	M8	18	18	G3/8	6	5	14	75	56.5	20	17	4
80	174	46	128	45	16	34.5	35.5	40	26	10	M20x1.5	M10	19	18	G3/8	7	8	15	93	72	25	22	4
100	189	51	138	55	16	37.5	38.5	40	26	10	M20x1.5	M10	19	18	G1/2	8	11	14	110	89	25	22	4
125	225	65	160	60	20	44.5	46.5	54	38	11	M27x2	M12	25	18	G1/2	8	14	13	138	110	32	27	6
160	260	80	160	65	20	48	50	72	50	13	M36x2	M16	25	24	G3/4	12	14	22	180	140	40	36	6

DNGU Series

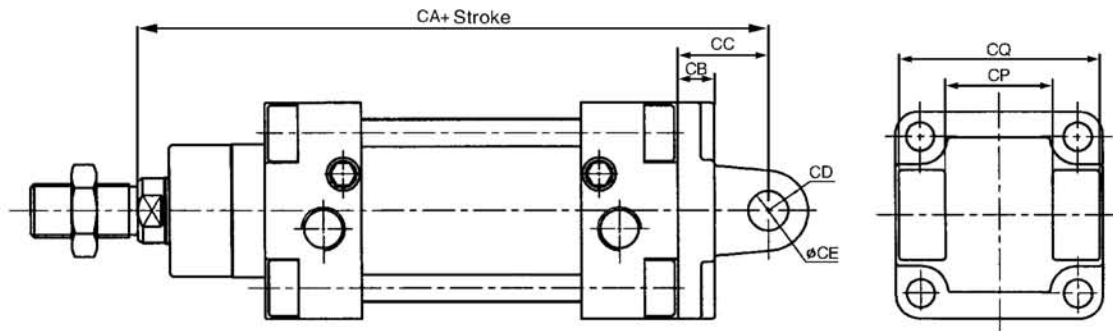


Bore \ stroke	A	B	C	D	E	F	G	H	I	J	K	L	M	N	O	P	Q	R	S	T	V	W	X
32	120	26	94	30	10	19	26	22	17	6	M10x1.25	M6	16	9	G1/8	2	7	7	50	32.5	12	10	4
40	135	30	105	35	10	21.5	26	24	17	7	M12x1.25	M6	16	11	G1/4	2	5	9	55	38	16	13	4
50	142	38	104	40	12	28.5	29	32	23	8	M16x1.5	M8	20	17	G1/4	5	2	11	65	46.5	20	17	4
63	158	37	121	45	12	28.5	35.5	32	23	8	M16x1.5	M8	20	18	G3/8	6	5	14	75	56.5	20	17	4
80	174	46	128	45	16	34.5	35.5	40	26	10	M20x1.5	M10	25	18	G3/8	7	8	15	93	72	25	22	4
100	189	51	138	55	16	37.5	38.5	40	26	10	M20x1.5	M10	28	18	G1/2	8	11	14	110	89	25	22	4
125	225	65	160	60	20	44.5	46.5	54	38	11	M27x2	M12	30	18	G1/2	8	14	13	138	110	32	27	6
160	260	80	160	65	20	48	50	72	50	13	M36x2	M16	35	24	G3/4	12	14	22	180	140	40	36	6

CA—Single—ear mounting type

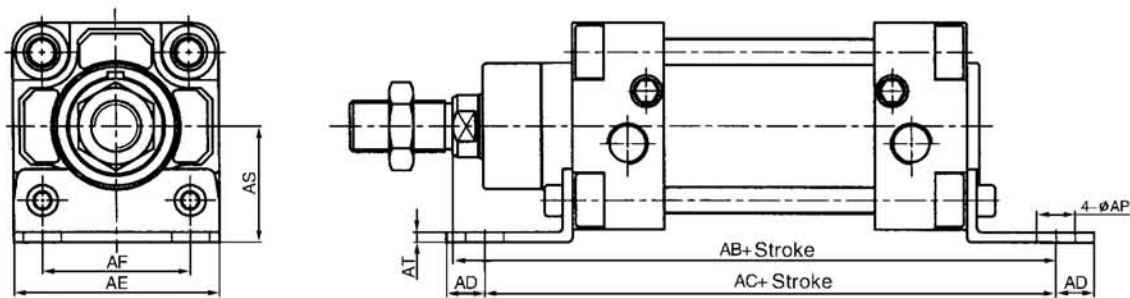


CB — Double—ear mounting type

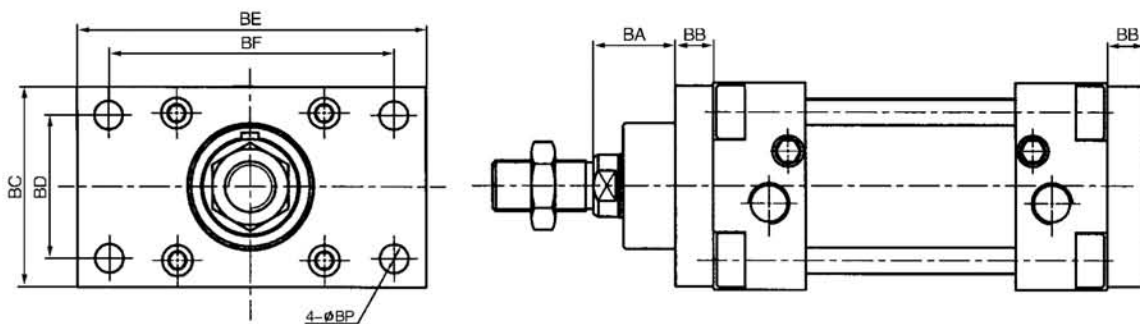


stroke Bore	DA	DC	CB	DD	φ DE	DQ	CA	CC	CB	CD	φ CE	CP	CQ
32	142	22	9	10	10	26	142	22	9	10	10	26	44.5
40	160	25	9	12	12	28	160	25	9	12	12	28	51.5
50	169	27	11	12	12	32	169	27	11	12	12	32	60
63	190	32	11	16	16	40	190	32	11	16	16	40	70
80	210	36	14	16	16	50	210	36	14	16	16	50	90
100	230	41	14	20	20	60	230	41	14	20	20	60	106
125	275	50	20	25	25	70	275	50	20	25	25	70	130
160	315	55	20	25	30	90	315	55	20	25	30	90	175

LB— Foot bracket mounting type



FA, FB—Front and rear flange mounting type



stroke Bore	AB	AC	AD	AE	AF	AP	AS	AT	BA	BB	BC	BD	BE	BF	BP
32	144	142	8	48	32	7	32	5	16	10	50	32	80	64	7
40	163	161	12	53	36	10	36	5	20	10	55	36	90	72	9
50	175	170	13	63	45	10	45	6	26	12	65	45	110	90	9
63	190	185	13	73	50	10	50	6	25	12	75	50	125	100	9
80	215	210	19	93	63	12	63	6	30	16	93	63	154	126	12
100	230	220	19	110	75	14.5	71	6	35	16	110	75	186	150	14
125	270	250	20	138	90	16.5	90	8	45	20	138	90	220	180	16
160	320	300	15	184	115	18.5	115	9	60	20	180	115	280	230	18